

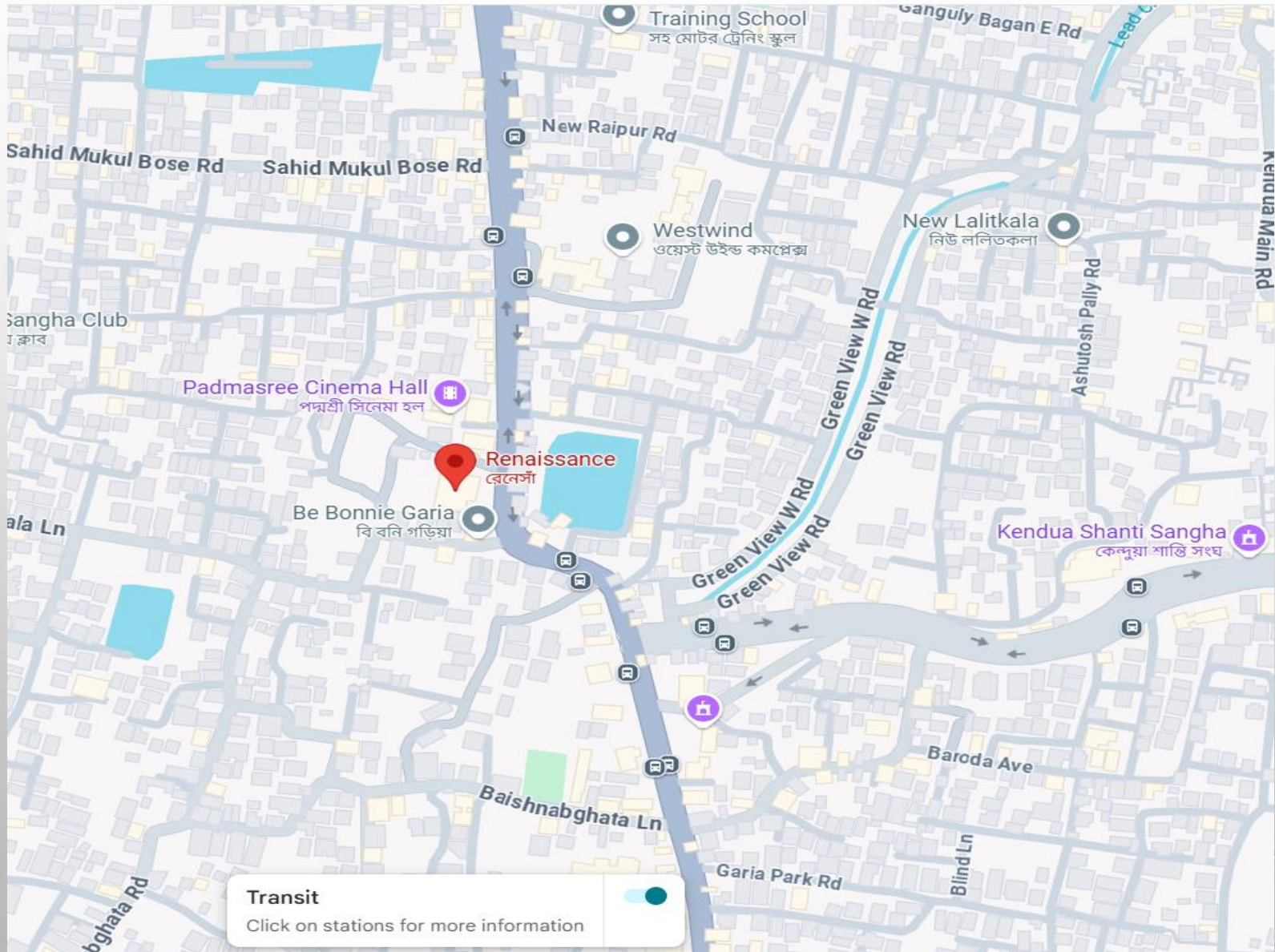
RENAISSANCE



PROJECT OVERVIEW

- SITE ADDRESS: 92, RAJA S.C MULLICK ROAD, KOLKATA-700047
- GOOGLE LOCATION: HTTPS://MAPS.APP.GOO.GL/WICT7NGYFGT2HEEN9?G_ST=AWB
- CONSTRUCTION: BASEMENT + GROUND + SIX STORIES
- LAND AREA: 32 COTTAH APPROX.
- FEATURES OF BUILDING:
 - PRIME FRONTAGE WITH HIGH VISIBILITY
 - ENERGY-EFFICIENT FACADE DESIGN
 - MODERN GLASS AND ALUMINIUM FAÇADE
 - LARGE RETAIL DISPLAY WINDOWS
 - SEPARATE ENTRY/EXIT FOR RETAIL AND OFFICES
 - 4 NO AUTOMATIC LIFTS / TWO STAIRCASE
 - FIRE FIGHTING SYSTEM PROVISION
 - AMPLE CAR PARKING SPACE IN BASEMENT

GOOGLE MAP



FLOOR-WISE SUMMARY

Floor	Chargeable Terrace Area (50% Included)	Saleable Area incl. Terrace (sq. ft.)	Usage
Basement		7327	Parking / Services
G1		3886	Retail / Showroom
1A		6384	Retail / Showroom
2A		9881	Retail / Office Space
3A		4301	Retail / Office Space
3B		5580	Retail / Office Space
4A		9881	Retail / Office Space
5A	492 incl. (983)	9131	Retail / Office Space
6A	1763 incl. (3525)	5966	Retail / Office Space

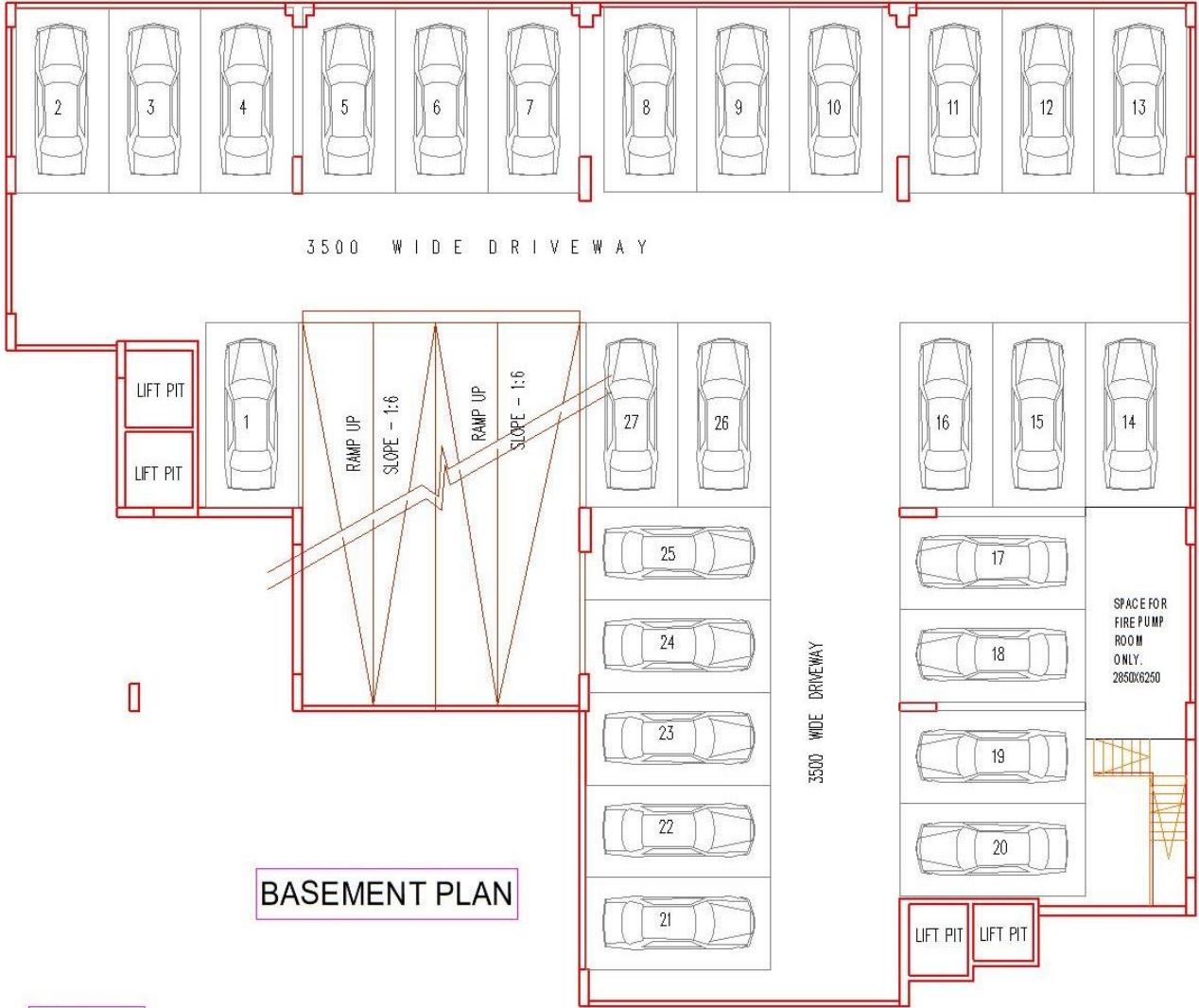
SUSTAINABILITY & BUILDING SERVICES

- SEPTIC TANK (ST), UNDERGROUND RESERVER (UGR) & OVERHEAD WATER TANK
- FIRE PROTECTION SYSTEM WITH SPRINKLERS & HYDRANTS
- ENERGY-EFFICIENT LED LIGHTING
- 24 HOURS POWER BACKUP

APPROVALS & COMPLIANCE

- MUNICIPAL BUILDING PLAN APPROVAL: OBTAINED
- WATER CONNECTION: OBTAINED
- FIRE NOC: OBTAINED
- ENVIRONMENTAL CLEARANCE: OBTAINED
- COMPLETION CERTIFICATE: OBTAINED

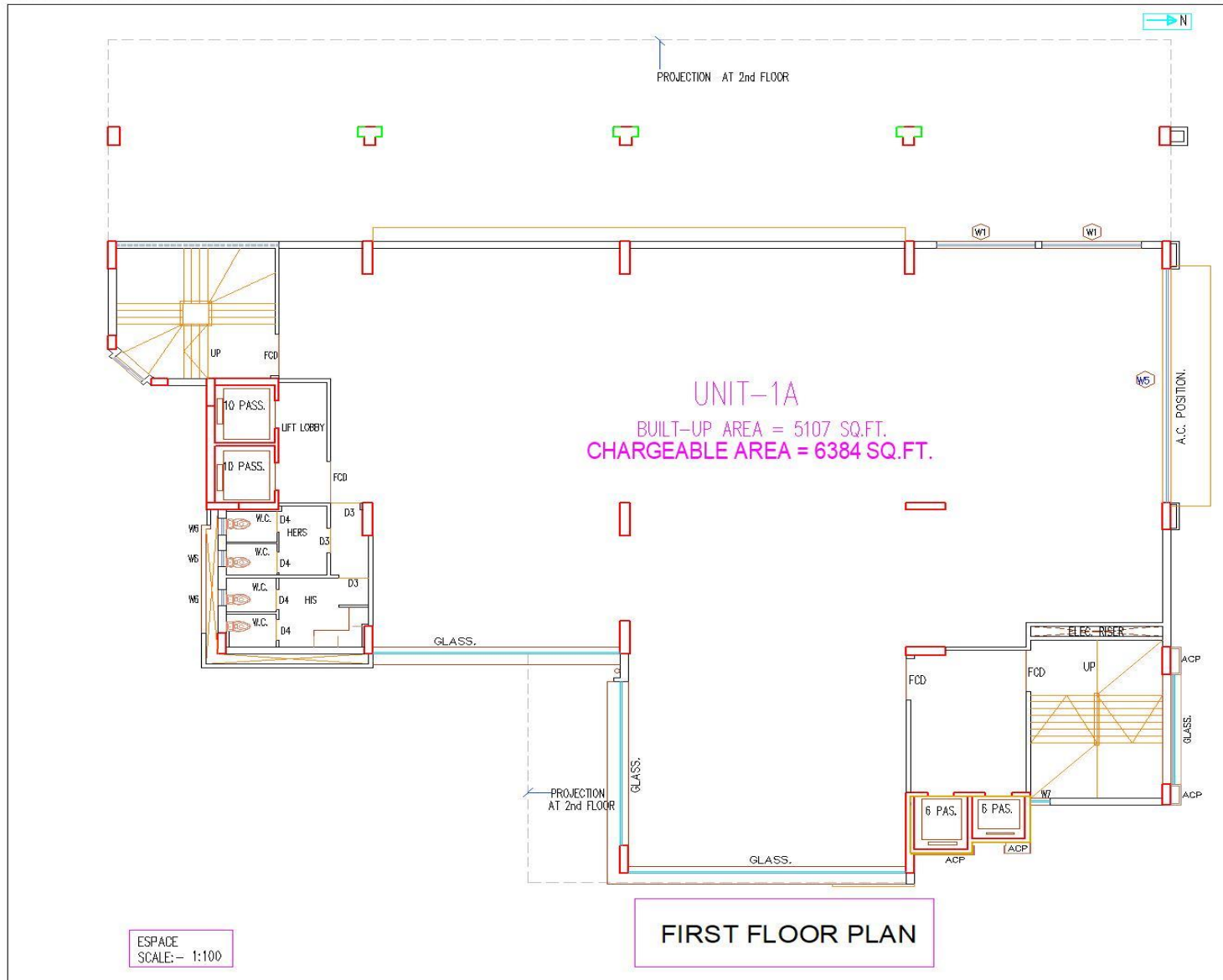
BASEMENT PLAN



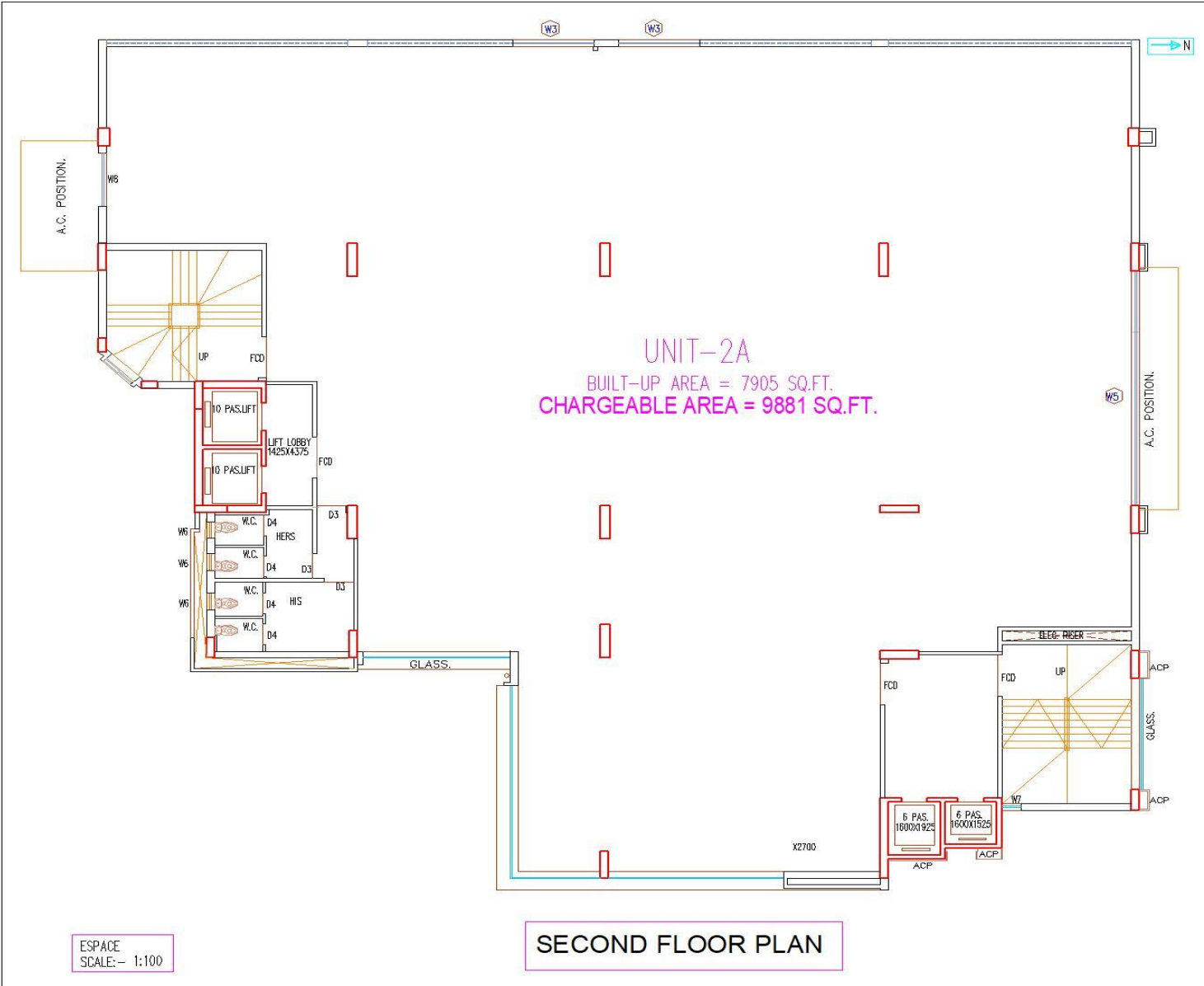
BASEMENT PLAN

ESPACE
SCALE: - 1:100

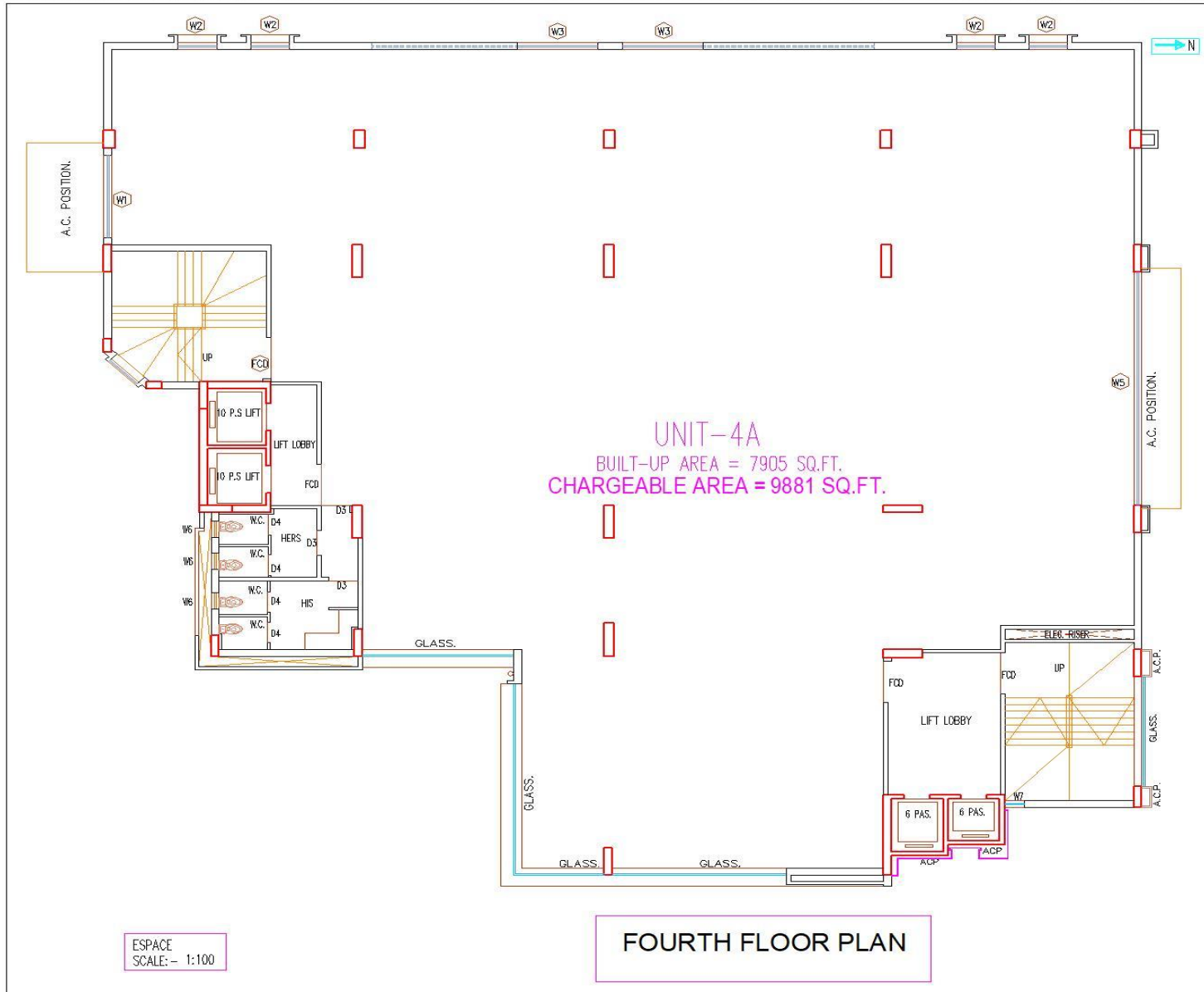
1ST FLOOR



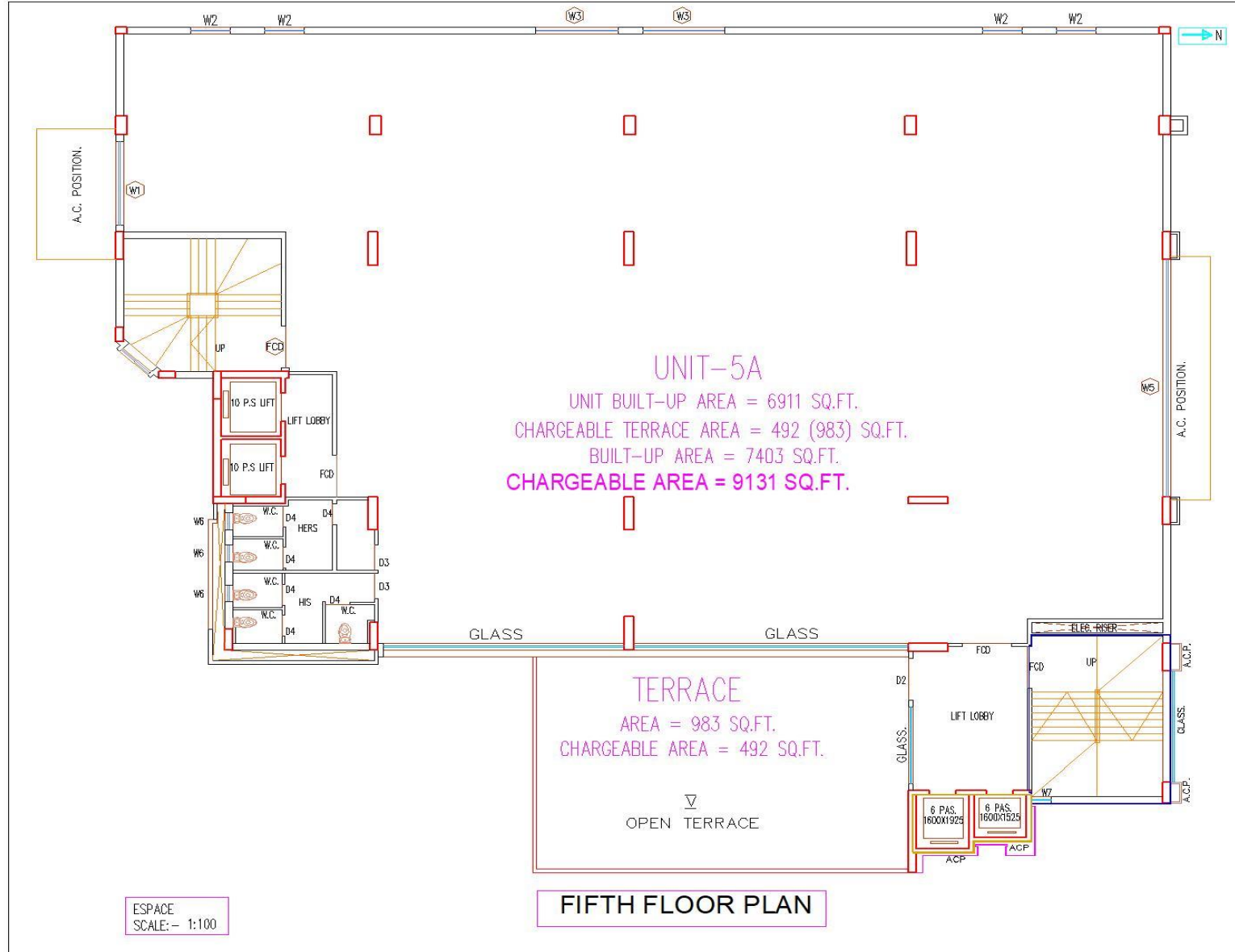
2ND FLOOR



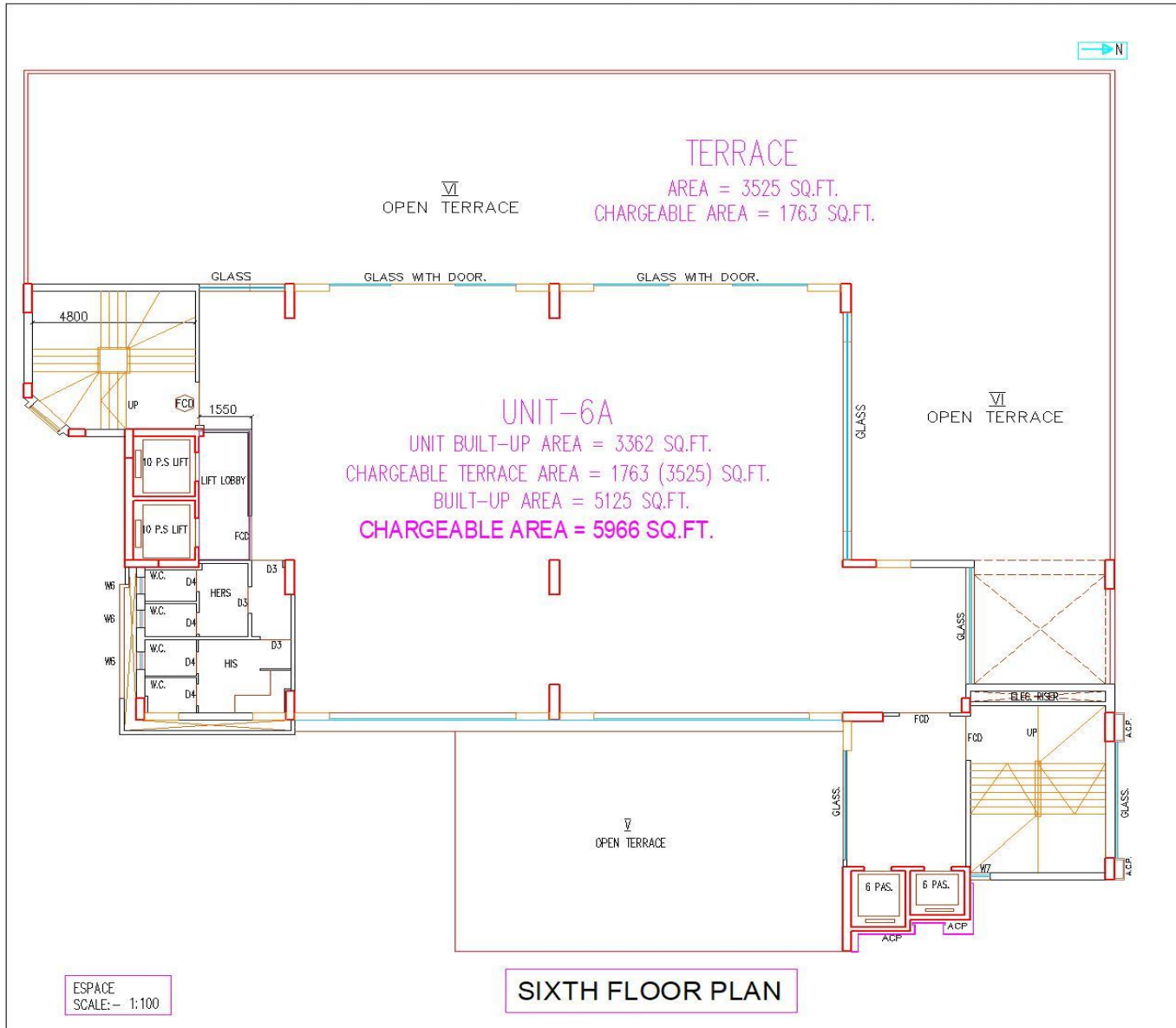
4TH FLOOR



5TH FLOOR



6TH FLOOR



**THANK
YOU**